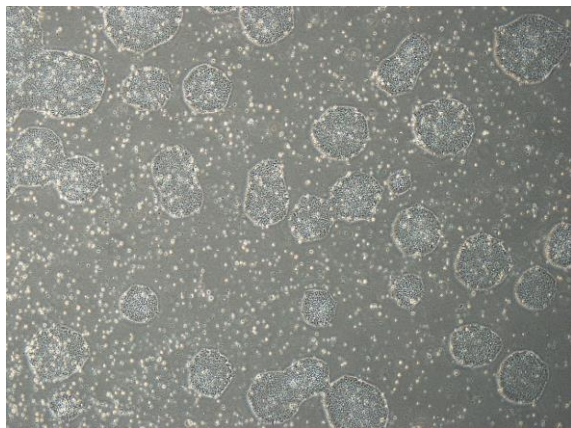
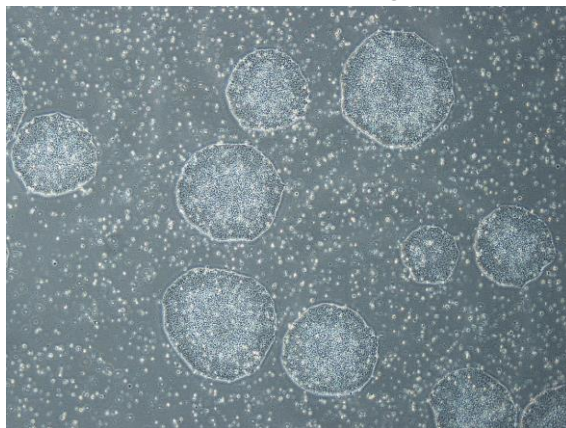


【 CiRA-j-1159 】 Morphology of iPSC colonies

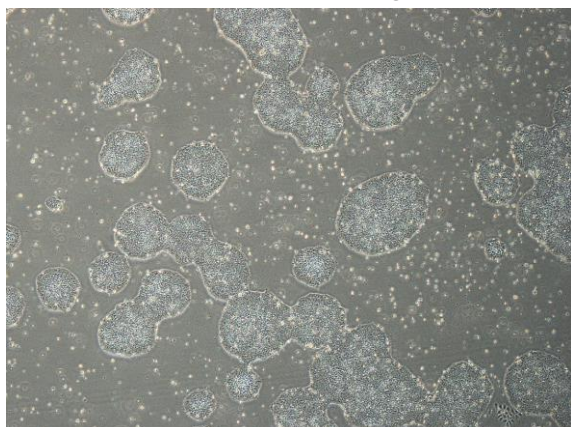
CiRA-j-1159-A: passage-3



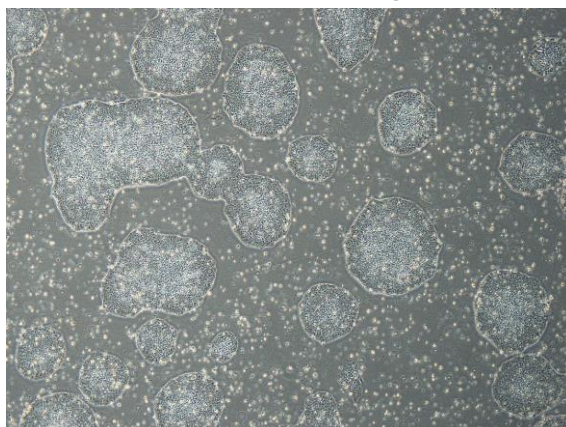
CiRA-j-1159-B: passage-3



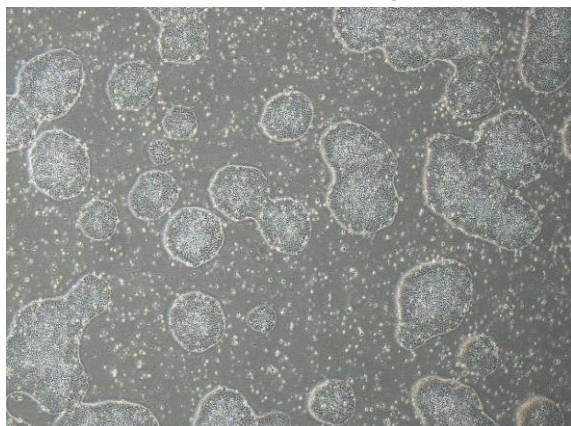
CiRA-j-1159-C: passage-3



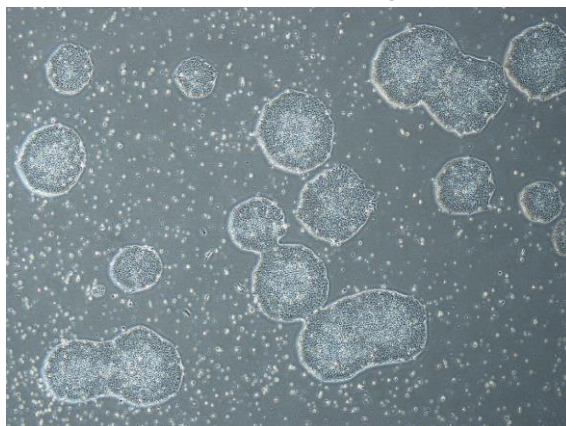
CiRA-j-1159-D: passage-3



CiRA-j-1159-E: passage-3



CiRA-j-1159-F: passage-3



(All images were captured at 4x magnification)